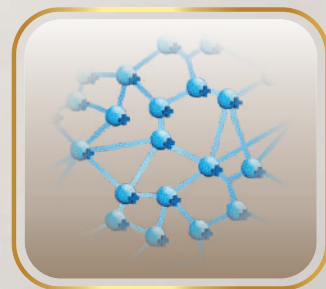


A Luxurious Makeover for Walls!



**Advanced
Polymer Tech**



About JK Cement

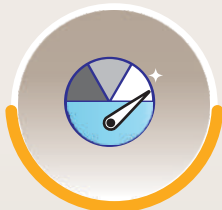
JK Cement Ltd. is one of the leading cement manufacturers in India that has partnered the Nation's multi-sector infrastructure needs on the strength of its product excellence, customer orientation and technology leadership. A pioneer in the White Cement industry, the company is the leading producer of Wall Putty in the Country and one of the largest white cement manufacturers in the world.

About



JK Cement WallMaxX Advanced is a premium wall putty formulated with advanced polymer technology which gives triple benefits in terms of better whiteness, enhanced smoothness and extra coverage. Its unique formulation imparts excellent adhesion and strength thereby enhancing the durability of the wall.

JK Cement WallMaxX Advanced provides



Increased Whiteness



Enhanced Smoothness

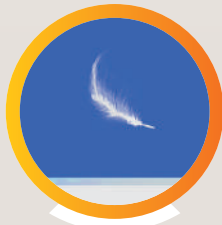


Extra Coverage



Interior And Exterior

JK Cement WallMaxX Advanced enhances the look of your wall in three ways



Super Smooth finish



Extra whiteness which brings out true tone of paint



Extra coverage of paints

*Terms & Condition :

1. JK Cement Ltd. reserves the right to revise product specification without notice. The information herein should not be read in isolation as it is meant only as guidance for the user, who should always ensure that they are fully conversant with the products and systems being used and their subsequent installation prior to the commencement of work.
2. The above mentioned parameters are tested under lab conditions. Actual performance depends on site usage, conditions and working.

APPLICATION TOOLS



Putty Tools



Mechanical Stirrer

AREAS OF APPLICATION

Cement
Base Plaster



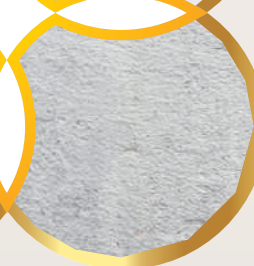
Ceiling
Surface



Concrete
Walls



Dry
Walls



APPLICATION METHOD



Step-1

Clean the surface thoroughly. Free it from dust, dirt, organic solvents & oil



Step-2

Mechanical mixing with stirrer is recommended for mixing. Use 38% to 42% water while mixing. Wait for 5 minutes before applying it. Prepared paste should be used within 2 to 3 hours



Step-3

Before application Pre wet the wall surface to remove loose dust particles



Step-4

The homogeneous paste to be applied using spatula / blade / trowel for first coat, from bottom to top and the second coat horizontally



Step-5

After drying of first coat remove all loose particles with sponge / cloth / putty blade before application of second coat



Step-6

Wait for the surface to dry completely before the application of paint or distemper for premium look

JKCement WallMaxX Advanced Technical Specifications

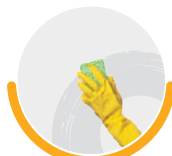
S No	Quality Parameters	Unit	Specification Range	JK Cement WallMaxX Advanced	Regular Putty
1	Whiteness	%	≥ 95.0	96.5	92 - 93.3
2	Water Demand	%	38.0 - 42.0	42	38 - 40
3	Mixing	Easy	Easy/Hard	Easy	Easy
4	Pot Life	Minutes	Min. 120	200	170 - 180
5	Workability (At the time of Application)	Rating*	>4	5	3
6	Tensile Adhesion Strength @ 14 Days	N/mm ²	> 1.10	1.18	1.02
7	Water Absorption @ 14 days in 30 Minutes	ml	≤ 0.5	0.1	0.1
8	Coverage	Sq.ft/Kg	Min. 18.0	20 - 22	15 - 17

*Rating : 2(Average), 3(Good), 4(Very Good), 5(Best)

Do's



**Dirt Free
Wall Surface**



**Pre - Wet
Wall Surface**



**Stir Well
before using**



**Store in Cool
and Dry Place**

Don'ts



**Don't apply on
dirty wall surfaces**



**Do not add extra
water to make the
paste workable**



**Do not re-mix
the already
hardened paste**



**Do not apply wet
on wet, use wet
on dry process for
application of putty**



Corporate Office : Prism Tower, 5th Floor, Ninaniya Estate, Gwal Pahari,
Gurugram - 122102, Haryana | Tel.: +0124 - 6919000
E-mail : ho.white@jkcement.com customercare.white@jkcement.com
Helpline No. : 1800 102 8868

Website : www.jkcement.com     